

# LEVALIGN® Ultra iS

Measuring surface flatness and levelling  
with precision and convenience



# For OEMs, maintenance and service

LEVALIGN® Ultra iS is a rotating laser used for the geometrical alignment of machines. The laser plane generated when rotating its head is used as reference to measure the heights difference of a surface. Thus it is possible to determine flatness and levelness. Its range of 20 m radius can be extended when used in conjunction with the ALIGNMENT CENTER software. The laser beam can be shot at 90° for perpendicularity measurements. With the use of a pentaprism, this characteristic also makes it possible to measure parallelism.



LEVALIGN® Ultra iS improves machine run-time and productivity.

LEVALIGN® Ultra iS has been successfully applied in the following industries for many years: petrochemical processing, paper mills, shipping, glass, marine engine building, mobile crane manufacturing and power generation.

## ► Flatness, levelling and perpendicularity

Levelling or measuring flatness of a plane. Using the PC software makes it possible to measure parallelism and perpendicularity of different surfaces

## ► Bluetooth® module

Wireless data transmission ensures flexible and convenient operation

## ► Variable reference points

Choose the points to set your reference plane

## ► Surface location to be welded or grinded

Reference your measurement either to the lowest or highest point

## ► Manual or automatic tolerance values

Set your own tolerance value or let the system do it for you

## ► Infinite number of points and surface area

InfiniSplice™ with ALIGNMENT CENTER software allows you to manage large or uneven surfaces as well as different laser setups

## For advanced industrial applications

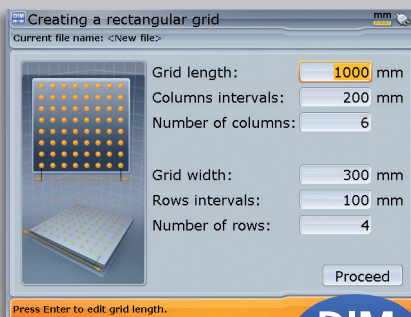
- Wind turbines
- Machine foundations
- Bed plates and tables
- Circular and rectangular flanges
- Machine half casing
- Crane slewing rings

The LEVALIGN® Ultra iS case includes all necessary components for geometrical alignment such as the LEVALIGN® laser, receiver and necessary mounting accessories.



# Levelling and surface flatness measurement

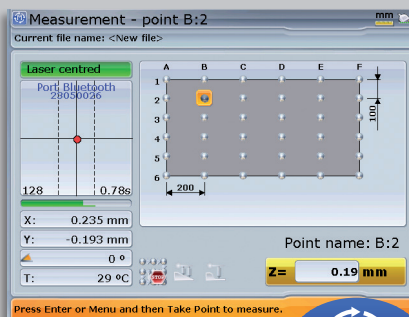
## Precision alignment in three steps – quick and straightforward



**DIM**

### Enter Dimensions

Create the grid to be measured using the Set-up wizard. Customized point properties: position, vertical offset and name.



**M**

### Measure

Just press a key to take a measurement. Several measurements can be taken at a point and consistent ones averaged using the measurement table.



**RES**

### Display results

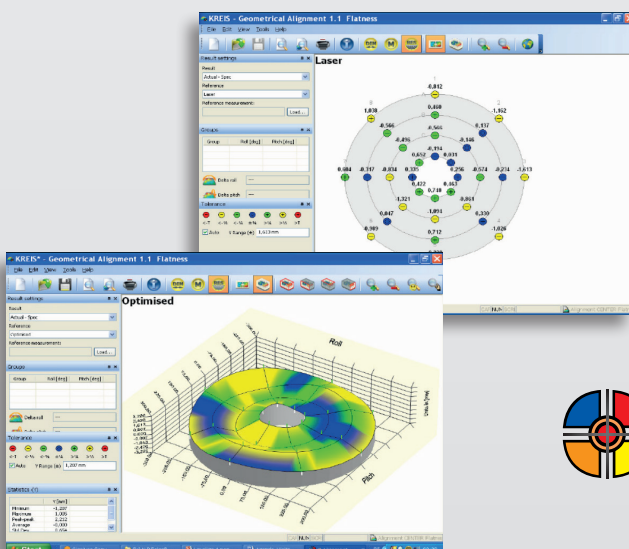
Get and analyze the results. Reference the measurement to the laser plane or to an optimized plane.

## More flatness – One software for all PRUFTECHNIK alignment products

ALIGNMENT CENTER is a Windows™ based software platform for all shaft and geometrical alignment applications. It is compatible with all PRUFTECHNIK products.

### Take advantage of exclusive features

- ▶ Job preparation beforehand
- ▶ Reference line comparison (similar or counterpart)
- ▶ InfiniSplice® for infinite number of points
- ▶ Measurement of parallelism and perpendicularity using group feature
- ▶ Surface levelling with the laser reference
- ▶ Customer defined or automatically evaluated tolerances
- ▶ Professional colour reports in various formats
- ▶ Picture import
- ▶ Company logo



**ALIGNMENT**  
CENTER



# LEVALIGN® laser emitter

## Technical data

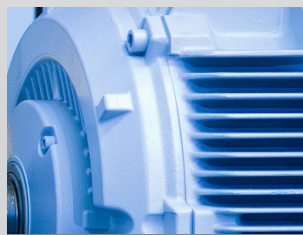
Laser	GaAlAs semiconductor laser
Wavelength	635 nm (typical)
Beam diameter	approx. 5 mm
Beam divergence	< 0,2 mrad
Beam power	<1 mW
Accuracy	+/- 0,02 mm/m
Sweep flatness error	+/- 0,015 mm
Spirit level resolution	0,02 mm/m
Measurement range	20 m radius; range has no limit when using InfiniSplice™ from the ALIGNMENT CENTER Flatness application
Laser safety class	Class 2; IEC 60825-1:2007
Safety precautions	Do not look into laser beam
Power supply	9V battery IEC 6LR61 (alkaline or lithium)
Operating time	50 hours continuous depending upon battery type
Temperature range	-5°C - 50°C (23°F - 122°F)
Weight	approx. 2.8 kg



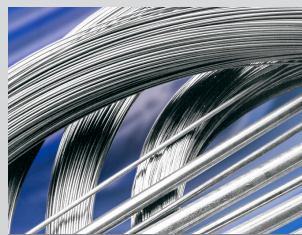
## PRUFTECHNIK delivers maintenance solutions worldwide



Alignment Systems



Condition Monitoring



Nondestructive Testing



Service & Support

LEVALIGN® is a registered trademark of PRUFTECHNIK Dieter Busch AG. No copying or reproduction of this information, in any form whatsoever, may be undertaken without express written permission of PRUFTECHNIK Dieter Busch AG. The information contained in this leaflet is subject to change without further notice due to the PRUFTECHNIK Dieter Busch AG policy of continuous product development. PRUFTECHNIK products are subject to patents granted or pending throughout the world.  
© Copyright 2017 by PRUFTECHNIK Dieter Busch AG.



PRUFTECHNIK  
Condition Monitoring GmbH  
Oskar-Messter-Str. 19-21  
85737 Ismaning, Germany  
Tel.: +49 89 99616-0  
Fax: +49 89 99616-200  
info@pruftechnik.com  
www.pruftechnik.com  
A member of the PRUFTECHNIK group